

Standard Programme – Shrink Chucks

Volume Shrink

Our power pack! Volume Shrink!

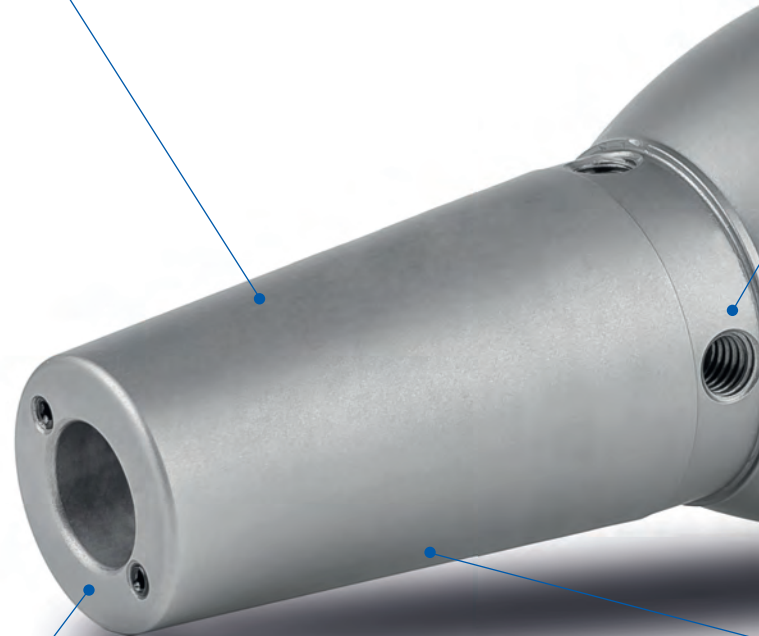
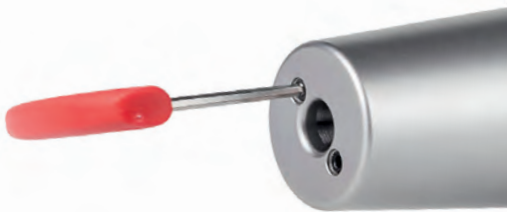
ADVANTAGE NO. 1

Suitable for heavy
machining and all
powerful applications



ADVANTAGE NO. 2

Resealable cooling channel
bores



These arguments make the difference!
Better surface finish, high machining
performance, protects spindle and machine ...



ADVANTAGE NO. 3

High radial run-out accuracy of $< 3 \mu\text{m}$

Fine balancing bores



ADVANTAGE NO. 4

Significantly better damping due to the geometry



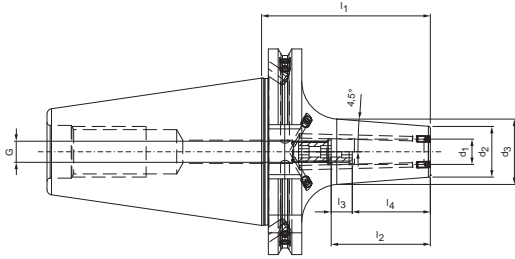
ADVANTAGE NO. 5

High rigidity



Volume Shrink, short | SK 50

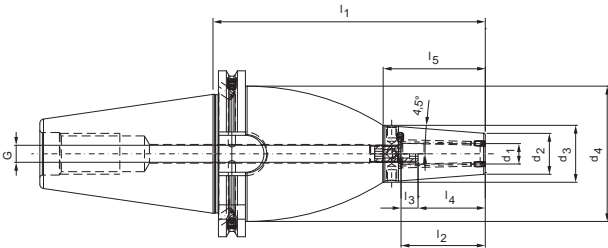
With additional resealable cooling channel bores



Nominal size SK	Dimensions							G	Wrench size	Weight kg	Order designation	Order No.	Stock
	d ₁	d ₂	d ₃	l ₁	l ₂	l ₃	l ₄						
50	6	21	27.7	80	36	10	26	M5	2.5	2.9	15.307.50.06.KKB	30655193	●
50	8	21	27.7	80	36	10	26	M6	3	2.9	15.307.50.08.KKB	30655194	●
50	10	24	31	80	41	10	31	M8x1	3	3	15.307.50.10.KKB	30655195	●
50	12	24	31	80	47	10	37	M10x1	5	3	15.307.50.12.KKB	30655196	●
50	16	27	34.3	80	50	10	40	M12x1_KKB	5	3	15.307.50.16.KKB	30655197	●
50	20	33	40.6	80	52	10	52	M16x1_KKB	5	3.1	15.307.50.20.KKB	30655198	●
50	25	44	55.9	100	58	10	48	M16x1_KKB	5	3.7	15.307.50.25.KKB	30655199	●
50	32	44	55.9	100	62	10	52	M16x1_KKB	5	3.5	15.307.50.32.KKB	30655200	●

Volume Shrink, long | SK 50

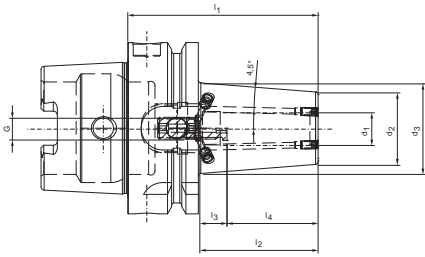
With additional resealable cooling channel bores



Nominal size SK	Dimensions									G	Wrench size	Weight kg	Order designation	Order No.	Stock
	d ₁	d ₂	d ₃	d ₄	l ₁	l ₂	l ₃	l ₄	l ₅						
50	6	21	29	79.5	160	36	10	26	51	M5_KKB	2.5	5	15.307.50.06.160.KKB	30655201	●
50	8	21	29	79.5	160	36	10	26	51	M6_KKB	3	5	15.307.50.08.160.KKB	30655202	●
50	10	24	32.7	79.5	160	41	10	31	55	M8x1_KKB	3	5.1	15.307.50.10.160.KKB	30655203	●
50	12	24	33.4	79.5	160	47	10	37	60	M10x1_KKB	5	5	15.307.50.12.160.KKB	30655204	●
50	16	27	37.2	79.5	160	50	10	40	65	M12x1_KKB	5	5	15.307.50.16.160.KKB	30655205	●
50	20	33	44	79.5	160	52	10	52	70	M16x1_KKB	5	5.1	15.307.50.20.160.KKB	30655206	●
50	25	44	55.8	79.5	160	58	10	48	75	M16x1_KKB	5	5.6	15.307.50.25.160.KKB	30655207	●
50	32	44	56.6	79.5	160	62	10	52	80	M16x1_KKB	5	5.4	15.307.50.32.160.KKB	30655208	●

Volume Shrink, short | HSK-A 63

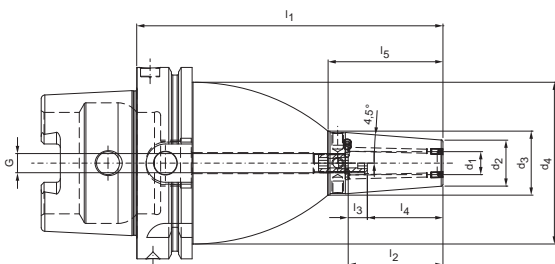
With additional resealable cooling channel bores



Nominal size HSK-A	Dimensions							G	Wrench size	Weight kg	Order designation	Order No.	Stock
	d ₁	d ₂	d ₃	l ₁	l ₂	l ₃	l ₄						
63	6	22	28.8	70	36	10	26	M5_KKB	2.5	0.8	16.307.63.06.KKB	30655242	●
63	8	22	28.8	70	36	10	26	M6_KKB	3	0.8	16.307.63.08.KKB	30655243	●
63	10	26.5	33.3	70	36	5	31	M8x1_KKB	3	0.9	16.307.63.10.KKB	30655244	●
63	12	26.5	33.3	70	40	3	37	M8x1_KKB	3	0.9	16.307.63.12.KKB	30655245	●
63	16	29.5	37.1	75	45	5	40	M8x1_KKB	3	0.9	16.307.63.16.KKB	30655246	●
63	20	35.5	43.1	75	45	3	52	M8x1_KKB	3	1	16.307.63.20.KKB	30655247	●
63	25	45	52.5	85	53	5	48	M8x1_KKB	3	1.3	16.307.63.25.KKB	30655248	●
63	32	45	52.5	85	55	3	52	M8x1_KKB	3	1.2	16.307.63.32.KKB	30655249	●

Volume Shrink, long | HSK-A 63

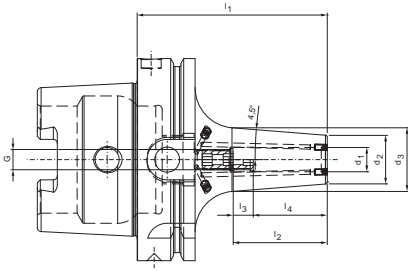
With additional resealable cooling channel bores



Nominal size HSK-A	Dimensions									G	Wrench size	Weight kg	Order designation	Order No.	Stock
	d ₁	d ₂	d ₃	d ₄	l ₁	l ₂	l ₃	l ₄	l ₅						
63	6	21	28.8	52.5	120	36	10	26	51	M5_KKB	2.5	1.3	16.307.63.06.120.KKB	30655250	●
63	8	21	28.8	52.5	120	36	10	26	51	M6_KKB	3	1.3	16.307.63.08.120.KKB	30655251	●
63	10	24	33.3	52.5	120	41	10	31	55	M8x1_KKB	3	1.4	16.307.63.10.120.KKB	30655252	●
63	12	24	33.3	52.5	120	47	10	37	60	M10x1_KKB	3	1.4	16.307.63.12.120.KKB	30655253	●
63	16	27	37.1	52.5	120	50	10	40	63	M12x1_KKB	5	1.4	16.307.63.16.120.KKB	30655254	●
63	20	33	43.1	52.5	120	52	10	42	65	M16x1_KKB	5	1.5	16.307.63.20.120.KKB	30655255	●
63	25	44	52.5	52.5	120	58	10	48	54	M16x1_KKB	5	1.7	16.307.63.25.120.KKB	30655256	●
63	32	44	52.5	52.5	120	62	10	52	54	M16x1_KKB	5	1.7	16.307.63.32.120.KKB	30655257	●

Volume Shrink, short | HSK-A 100

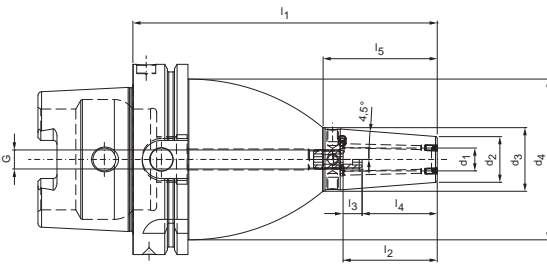
With additional resealable cooling channel bores



Nominal size HSK-A	Dimensions							G	Wrench size	Weight kg	Order designation	Order No.	Stock
	d ₁	d ₂	d ₃	l ₁	l ₂	l ₃	l ₄						
100	6	21	28.8	85	36	10	26	M5	2.5	2.2	16.307.100.06.KKB	30655258	●
100	8	21	28.8	85	36	10	26	M6	3	2.3	16.307.100.08.KKB	30655259	●
100	10	24	33.3	90	41	10	31	M8x1	3	2.3	16.307.100.10.KKB	30655260	●
100	12	24	33.3	95	47	10	37	M10x1	3	2.4	16.307.100.12.KKB	30655261	●
100	16	27	37.1	100	50	10	40	M12x1_KKB	5	2.4	16.307.100.16.KKB	30655262	●
100	20	33	43.1	105	52	10	42	M16x1_KKB	5	2.6	16.307.100.20.KKB	30655263	●
100	25	44	52.5	115	58	10	48	M16x1_KKB	5	3.1	16.307.100.25.KKB	30655264	●
100	32	44	52.5	120	62	10	52	M16x1_KKB	5	3	16.307.100.32.KKB	30655265	●

Volume Shrink, long | HSK-A 100

With additional resealable cooling channel bores



Nominal size HSK-A	Dimensions									G	Wrench size	Weight kg	Order designation	Order No.	Stock
	d ₁	d ₂	d ₃	d ₄	l ₁	l ₂	l ₃	l ₄	l ₅						
100	6	21	29	84.5	160	36	10	26	51	M5_KKB	2.5	4.4	16.307.100.06.160.KKB	30655266	●
100	8	21	29	84.5	160	36	10	26	51	M6_KKB	3	4.4	16.307.100.08.160.KKB	30655267	●
100	10	24	32.7	84.5	160	41	10	31	55	M8x1_KKB	3	4.4	16.307.100.10.160.KKB	30655268	●
100	12	24	33.4	84.5	160	47	10	37	60	M10x1_KKB	5	4.4	16.307.100.12.160.KKB	30655269	●
100	16	27	37.2	84.5	160	50	10	40	65	M12x1_KKB	5	4.4	16.307.100.16.160.KKB	30655270	●
100	20	33	44	84.5	160	52	10	52	70	M16x1_KKB	5	4.4	16.307.100.20.160.KKB	30655271	●
100	25	44	55.8	84.5	160	58	10	48	75	M16x1_KKB	5	4.8	16.307.100.25.160.KKB	30655272	●
100	32	44	56.6	84.5	160	62	10	52	80	M16x1_KKB	5	4.6	16.307.100.32.160.KKB	30655273	●

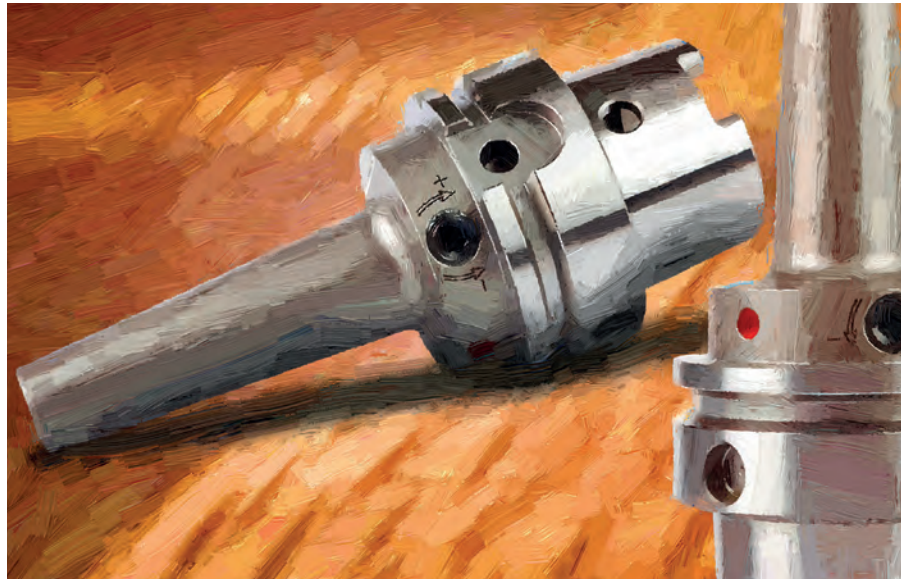
HPH 3° MULTI

Revolutionary HPH technology with lean contour

WTE achieves a revolution in clamping technology with the new HPH technology with lean contour. For the first time it has become possible to utilise the benefits of a hydraulic chuck in an even wider field of applications.

On the one hand, the new chuck has a lean contour with the 3° back taper known from the shrink chuck. On the other hand it offers the advantages of the WTE HPH (High Performance Holder). The new chuck offers significant benefits not only for mould making, but also for applications in the automotive and aerospace sector.

Why? The HPH technology with lean contour is also suitable for all machining tasks in contour-critical areas.



ARGUMENTS

- High torque transmission
- Lean contour (3°) especially for mould building
- Thermal stability up to 80° C
- Quick and easy chucking
- Good vibration damping properties
- Radial run-out less than 0.003 mm

AT A GLANCE

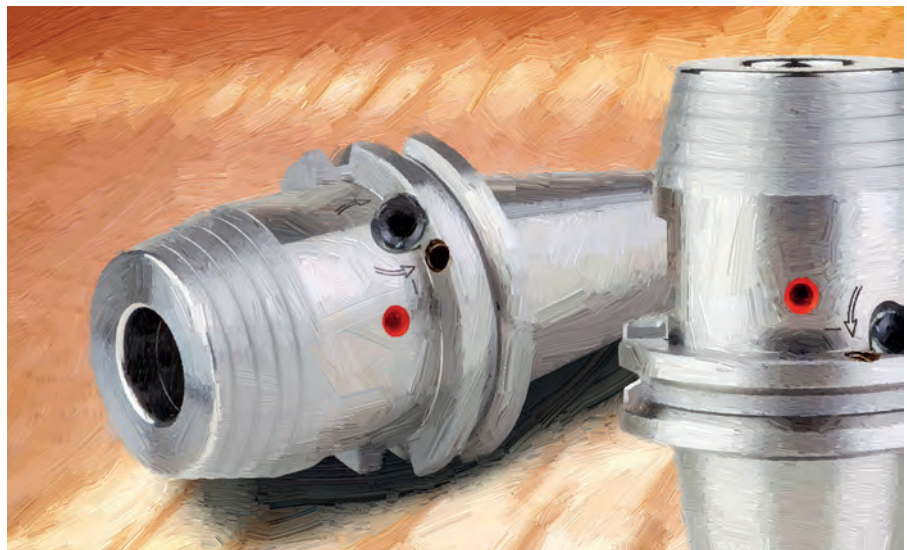
- Available in shank form HSK-A 63 and SK 40
- Clamping diameter 6.0, 8.0, 10.0 and 12.0 mm
- Chip version (Balluf chip) possible on request
- Fine balanced to G 2.5 at 25000 rev/min
- Clamping range with h6 tolerance
- Can also be used with reducing sleeve

WTE Hydros

Hydraulic chucks – high holding forces, simple operation

High radial run-out accuracies and excellent vibration damping are the principal features of WTE hydraulic chucks. The use of WTE hydraulic chucks guarantees optimum workpiece finishes, long service lives for the tools that are used and optimisation of the production process in terms of economical considerations.

WTE hydraulic chucks are available with both axial and radial length adjustment and are available in the standard range with the most commonly used shank forms. The use of reducing sleeves and special hydraulic chuck extensions also provides additional flexibility for this tool.



ARGUMENTS

- High radial run-out accuracy (< 0.003 mm)
- Vibration damping effect
- High radial rigidity
- Clamping without additional equipment
- Fast set-up times possible
- Flexible clamping range due to reducing sleeves

AT A GLANCE

- Available in all common shank forms
- Variant with radial or axial length adjustment possible
- Chip version (Balluf chip) possible for shank form SK and HSK-A
- MQL version also available on request

See detailed information at www.wte-tools.de



Your specialist for high
accuracy chucks

Hydraulic Chucks
HPH - High Performance Holder
Shrink Chucks
Precision CNC Drill Chucks
Standard NC Drill Chucks
MICRO Universal Chucks
Services

www.wte-tools.de

