

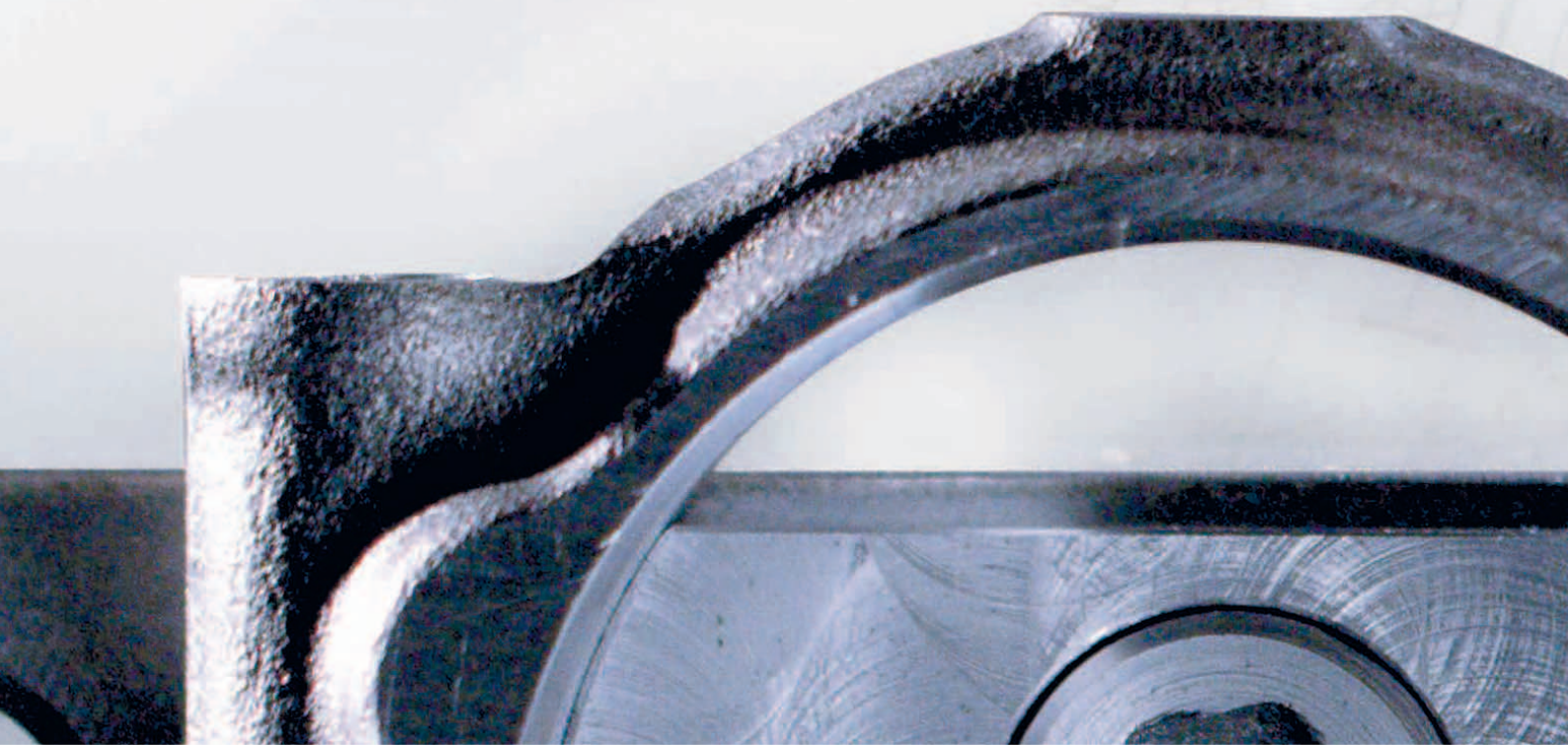
SuperV-X

 **STOCK**

Span – um Span – Spitze

Suppe

- kombinierte Optimierung aller Werkzeugparameter ermöglicht hohe Vorschübe und Zeitspanvolumina
- weiterentwickelte TiAlN nano-Beschichtung
- Stahlbearbeitung mit hoher Performance



rw-x



SuperV-X

SPITZENWINKEL

140°

HARTMETALL

neu entwickelt

BOHRTIEFE

5xD, 7xD

MIT INNENKÜHLUNG

GEOMETRIE

Kegelmantelschliff, 4 Führungsfasen, Negativfase

BESCHICHTUNG

TiAIN nano

TOLERANZEN

m7

DURCHMESSER-BEREICH

3,0 – 20,0mm

SCHAFTFORM

HA



ISO-CODES



P	Stahl, hochlegierter Stahl
M	Rostfreier Stahl
K	Grauguss, Sphäroguss und Temperguss
N	Aluminium und andere Nichteisenmetalle
S	Sonder-, Super- und Titanlegierungen
H	Gehärteter Stahl und Hartguss

Angaben zur Eignung der Werkzeuge in versch. Materialklassen sowie max. Zugfestigkeit und Härte finden Sie auf den Produktseiten:

- optimal geeignet
- bedingt geeignet

PIKTOGRAMME



SCHNEIDSTOFF	VHM
BESCHICHTUNG	TiAlN nano
BOHRTIEFE	5xD 7xD
SCHNEIDRICHTUNG	 rechts
SCHAFTFORM	 HA
SPITZENWINKEL	 140°
NORM	DIN 6537L WN
TYP	SuperV- X
DURCHMESSER- TOLERANZ	m7

Nachdruck, auch auszugsweise, nicht gestattet.

Eventuelle Druckfehler oder zwischenzeitlich eingetretene Änderungen jeder Art berechtigen nicht zu Ansprüchen. Alle mit DIN gekennzeichneten Produkte können abweichend der Maße im Katalog geliefert werden, solange diese der angezeigten DIN-Norm entsprechen.

SuperV-Bohrer

SuperV-Bohrer mit Innenkühlung

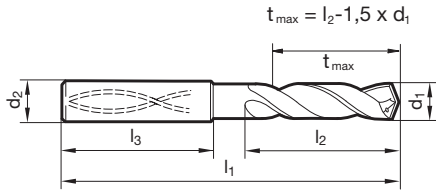


Katalog-Nr. 51786



P	M	K	N	S	H
●	○	○		○	○

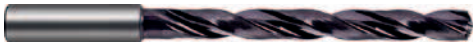
- Kegelmantelanschliff
- Hauptschneidenform konkav
- optimierte Schneidengeometrie
- vier Führungsfasen



d1 mm	d2 mm	l1 mm	l2 mm	l3 mm	d1 mm	d2 mm	l1 mm	l2 mm	l3 mm
3,000	6,000	66,000	28,000	36,000	6,350	8,000	91,000	53,000	36,000
3,100	6,000	66,000	28,000	36,000	6,400	8,000	91,000	53,000	36,000
3,170	6,000	66,000	28,000	36,000	6,500	8,000	91,000	53,000	36,000
3,200	6,000	66,000	28,000	36,000	6,530	8,000	91,000	53,000	36,000
3,250	6,000	66,000	28,000	36,000	6,550	8,000	91,000	53,000	36,000
3,300	6,000	66,000	28,000	36,000	6,600	8,000	91,000	53,000	36,000
3,400	6,000	66,000	28,000	36,000	6,700	8,000	91,000	53,000	36,000
3,500	6,000	66,000	28,000	36,000	6,750	8,000	91,000	53,000	36,000
3,570	6,000	66,000	28,000	36,000	6,800	8,000	91,000	53,000	36,000
3,600	6,000	66,000	28,000	36,000	6,900	8,000	91,000	53,000	36,000
3,700	6,000	66,000	28,000	36,000	7,000	8,000	91,000	53,000	36,000
3,800	6,000	74,000	36,000	36,000	7,100	8,000	91,000	53,000	36,000
3,900	6,000	74,000	36,000	36,000	7,140	8,000	91,000	53,000	36,000
3,970	6,000	74,000	36,000	36,000	7,200	8,000	91,000	53,000	36,000
4,000	6,000	74,000	36,000	36,000	7,300	8,000	91,000	53,000	36,000
4,040	6,000	74,000	36,000	36,000	7,400	8,000	91,000	53,000	36,000
4,100	6,000	74,000	36,000	36,000	7,500	8,000	91,000	53,000	36,000
4,200	6,000	74,000	36,000	36,000	7,540	8,000	91,000	53,000	36,000
4,300	6,000	74,000	36,000	36,000	7,550	8,000	91,000	53,000	36,000
4,370	6,000	74,000	36,000	36,000	7,600	8,000	91,000	53,000	36,000
4,400	6,000	74,000	36,000	36,000	7,650	8,000	91,000	53,000	36,000
4,500	6,000	74,000	36,000	36,000	7,700	8,000	91,000	53,000	36,000
4,600	6,000	74,000	36,000	36,000	7,800	8,000	91,000	53,000	36,000
4,650	6,000	74,000	36,000	36,000	7,900	8,000	91,000	53,000	36,000
4,700	6,000	74,000	36,000	36,000	7,940	8,000	91,000	53,000	36,000
4,760	6,000	82,000	44,000	36,000	8,000	8,000	91,000	53,000	36,000
4,800	6,000	82,000	44,000	36,000	8,100	10,000	103,000	61,000	40,000
4,900	6,000	82,000	44,000	36,000	8,200	10,000	103,000	61,000	40,000
5,000	6,000	82,000	44,000	36,000	8,300	10,000	103,000	61,000	40,000
5,100	6,000	82,000	44,000	36,000	8,330	10,000	103,000	61,000	40,000
5,110	6,000	82,000	44,000	36,000	8,400	10,000	103,000	61,000	40,000
5,160	6,000	82,000	44,000	36,000	8,500	10,000	103,000	61,000	40,000
5,200	6,000	82,000	44,000	36,000	8,600	10,000	103,000	61,000	40,000
5,300	6,000	82,000	44,000	36,000	8,700	10,000	103,000	61,000	40,000
5,400	6,000	82,000	44,000	36,000	8,730	10,000	103,000	61,000	40,000
5,410	6,000	82,000	44,000	36,000	8,800	10,000	103,000	61,000	40,000
5,500	6,000	82,000	44,000	36,000	8,900	10,000	103,000	61,000	40,000
5,550	6,000	82,000	44,000	36,000	9,000	10,000	103,000	61,000	40,000
5,560	6,000	82,000	44,000	36,000	9,100	10,000	103,000	61,000	40,000
5,600	6,000	82,000	44,000	36,000	9,130	10,000	103,000	61,000	40,000
5,700	6,000	82,000	44,000	36,000	9,200	10,000	103,000	61,000	40,000
5,800	6,000	82,000	44,000	36,000	9,250	10,000	103,000	61,000	40,000
5,900	6,000	82,000	44,000	36,000	9,300	10,000	103,000	61,000	40,000
5,950	6,000	82,000	44,000	36,000	9,340	10,000	103,000	61,000	40,000
6,000	6,000	82,000	44,000	36,000	9,400	10,000	103,000	61,000	40,000
6,100	8,000	91,000	53,000	36,000	9,500	10,000	103,000	61,000	40,000
6,200	8,000	91,000	53,000	36,000	9,520	10,000	103,000	61,000	40,000
6,300	8,000	91,000	53,000	36,000	9,550	10,000	103,000	61,000	40,000

SuperV-Bohrer

SuperV-Bohrer mit Innenkühlung

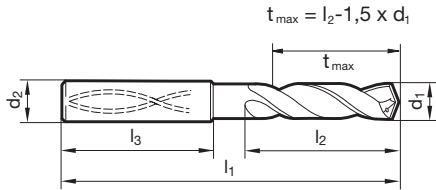


Katalog-Nr. 51791



P	M	K	N	S	H
●	○	○	○	○	○

- Kegelmantelanschliff
- Hauptschneidenform konkav
- optimierte Schneidengeometrie
- vier Führungsfasen



d1 mm	d2 mm	l1 mm	l2 mm	l3 mm	d1 mm	d2 mm	l1 mm	l2 mm	l3 mm
3,000	6,000	70,000	30,000	36,000	6,350	8,000	106,000	66,000	36,000
3,100	6,000	70,000	30,000	36,000	6,400	8,000	106,000	66,000	36,000
3,170	6,000	70,000	30,000	36,000	6,500	8,000	106,000	66,000	36,000
3,200	6,000	70,000	30,000	36,000	6,530	8,000	106,000	66,000	36,000
3,250	6,000	70,000	30,000	36,000	6,550	8,000	106,000	66,000	36,000
3,300	6,000	70,000	30,000	36,000	6,600	8,000	106,000	66,000	36,000
3,400	6,000	75,000	35,500	36,000	6,700	8,000	106,000	66,000	36,000
3,500	6,000	75,000	35,500	36,000	6,750	8,000	106,000	66,000	36,000
3,570	6,000	75,000	35,500	36,000	6,800	8,000	106,000	66,000	36,000
3,600	6,000	75,000	35,500	36,000	6,900	8,000	116,000	76,000	36,000
3,700	6,000	75,000	35,500	36,000	7,000	8,000	116,000	76,000	36,000
3,800	6,000	75,000	37,500	36,000	7,100	8,000	116,000	76,000	36,000
3,900	6,000	75,000	37,500	36,000	7,140	8,000	116,000	76,000	36,000
3,970	6,000	75,000	37,500	36,000	7,200	8,000	116,000	76,000	36,000
4,000	6,000	75,000	37,500	36,000	7,300	8,000	116,000	76,000	36,000
4,040	6,000	75,000	37,500	36,000	7,400	8,000	116,000	76,000	36,000
4,100	6,000	75,000	37,500	36,000	7,500	8,000	116,000	76,000	36,000
4,200	6,000	75,000	37,500	36,000	7,540	8,000	116,000	76,000	36,000
4,300	6,000	85,000	45,000	36,000	7,600	8,000	116,000	76,000	36,000
4,370	6,000	85,000	45,000	36,000	7,700	8,000	116,000	76,000	36,000
4,400	6,000	85,000	45,000	36,000	7,800	8,000	116,000	76,000	36,000
4,500	6,000	85,000	45,000	36,000	7,900	8,000	116,000	76,000	36,000
4,600	6,000	85,000	45,000	36,000	7,940	8,000	116,000	76,000	36,000
4,650	6,000	85,000	45,000	36,000	8,000	8,000	116,000	76,000	36,000
4,700	6,000	85,000	45,000	36,000	8,100	10,000	131,000	87,000	40,000
4,760	6,000	90,000	50,000	36,000	8,200	10,000	131,000	87,000	40,000
4,800	6,000	90,000	50,000	36,000	8,300	10,000	131,000	87,000	40,000
4,900	6,000	90,000	50,000	36,000	8,330	10,000	131,000	87,000	40,000
5,000	6,000	90,000	50,000	36,000	8,400	10,000	131,000	87,000	40,000
5,100	6,000	90,000	50,000	36,000	8,500	10,000	131,000	87,000	40,000
5,110	6,000	90,000	50,000	36,000	8,600	10,000	131,000	87,000	40,000
5,160	6,000	90,000	50,000	36,000	8,700	10,000	131,000	87,000	40,000
5,200	6,000	90,000	50,000	36,000	8,730	10,000	131,000	87,000	40,000
5,300	6,000	90,000	50,000	36,000	8,800	10,000	131,000	87,000	40,000
5,400	6,000	97,000	57,000	36,000	8,900	10,000	131,000	87,000	40,000
5,410	6,000	97,000	57,000	36,000	9,000	10,000	131,000	87,000	40,000
5,500	6,000	97,000	57,000	36,000	9,100	10,000	139,000	95,000	40,000
5,550	6,000	97,000	57,000	36,000	9,130	10,000	139,000	95,000	40,000
5,560	6,000	97,000	57,000	36,000	9,200	10,000	139,000	95,000	40,000
5,600	6,000	97,000	57,000	36,000	9,250	10,000	139,000	95,000	40,000
5,700	6,000	97,000	57,000	36,000	9,300	10,000	139,000	95,000	40,000
5,800	6,000	97,000	57,000	36,000	9,340	10,000	139,000	95,000	40,000
5,900	6,000	97,000	57,000	36,000	9,400	10,000	139,000	95,000	40,000
5,950	6,000	97,000	57,000	36,000	9,500	10,000	139,000	95,000	40,000
6,000	6,000	97,000	57,000	36,000	9,520	10,000	139,000	95,000	40,000
6,100	8,000	106,000	66,000	36,000	9,600	10,000	139,000	95,000	40,000
6,200	8,000	106,000	66,000	36,000	9,700	10,000	139,000	95,000	40,000
6,300	8,000	106,000	66,000	36,000	9,800	10,000	139,000	95,000	40,000

d1 mm	d2 mm	l1 mm	l2 mm	l3 mm	d1 mm	d2 mm	l1 mm	l2 mm	l3 mm
9,900	10,000	139,000	95,000	40,000	13,890	14,000	182,000	133,000	45,000
9,920	10,000	139,000	95,000	40,000	14,000	14,000	182,000	133,000	45,000
10,000	10,000	139,000	95,000	40,000	14,100	16,000	204,000	152,000	48,000
10,100	12,000	155,000	106,000	45,000	14,200	16,000	204,000	152,000	48,000
10,200	12,000	155,000	106,000	45,000	14,290	16,000	204,000	152,000	48,000
10,300	12,000	155,000	106,000	45,000	14,300	16,000	204,000	152,000	48,000
10,320	12,000	155,000	106,000	45,000	14,500	16,000	204,000	152,000	48,000
10,400	12,000	155,000	106,000	45,000	14,700	16,000	204,000	152,000	48,000
10,500	12,000	155,000	106,000	45,000	14,800	16,000	204,000	152,000	48,000
10,600	12,000	155,000	106,000	45,000	15,000	16,000	204,000	152,000	48,000
10,700	12,000	155,000	106,000	45,000	15,100	16,000	204,000	152,000	48,000
10,720	12,000	155,000	106,000	45,000	15,300	16,000	204,000	152,000	48,000
10,800	12,000	155,000	106,000	45,000	15,480	16,000	204,000	152,000	48,000
10,900	12,000	155,000	106,000	45,000	15,500	16,000	204,000	152,000	48,000
11,000	12,000	155,000	106,000	45,000	15,700	16,000	204,000	152,000	48,000
11,100	12,000	163,000	114,000	45,000	15,800	16,000	204,000	152,000	48,000
11,110	12,000	163,000	114,000	45,000	15,870	16,000	204,000	152,000	48,000
11,200	12,000	163,000	114,000	45,000	16,000	16,000	204,000	152,000	48,000
11,300	12,000	163,000	114,000	45,000	16,300	18,000	223,000	171,000	48,000
11,400	12,000	163,000	114,000	45,000	16,500	18,000	223,000	171,000	48,000
11,500	12,000	163,000	114,000	45,000	16,700	18,000	223,000	171,000	48,000
11,510	12,000	163,000	114,000	45,000	16,900	18,000	223,000	171,000	48,000
11,600	12,000	163,000	114,000	45,000	17,000	18,000	223,000	171,000	48,000
11,700	12,000	163,000	114,000	45,000	17,500	18,000	223,000	171,000	48,000
11,800	12,000	163,000	114,000	45,000	17,700	18,000	223,000	171,000	48,000
11,900	12,000	163,000	114,000	45,000	18,000	18,000	223,000	171,000	48,000
11,910	12,000	163,000	114,000	45,000	18,500	20,000	244,000	190,000	50,000
12,000	12,000	163,000	114,000	45,000	18,900	20,000	244,000	190,000	50,000
12,100	14,000	182,000	133,000	45,000	19,000	20,000	244,000	190,000	50,000
12,200	14,000	182,000	133,000	45,000	19,050	20,000	244,000	190,000	50,000
12,300	14,000	182,000	133,000	45,000	19,500	20,000	244,000	190,000	50,000
12,400	14,000	182,000	133,000	45,000	19,800	20,000	244,000	190,000	50,000
12,500	14,000	182,000	133,000	45,000	20,000	20,000	244,000	190,000	50,000
12,600	14,000	182,000	133,000	45,000					
12,700	14,000	182,000	133,000	45,000					
12,800	14,000	182,000	133,000	45,000					
12,900	14,000	182,000	133,000	45,000					
13,000	14,000	182,000	133,000	45,000					
13,100	14,000	182,000	133,000	45,000					
13,490	14,000	182,000	133,000	45,000					
13,500	14,000	182,000	133,000	45,000					
13,700	14,000	182,000	133,000	45,000					

SuperV-X

Arbeitsrichtwerte

Vorschubreihen											
Code-Buchstabe	A	B	C	D	E	F	G	H	I		
Werkzeug-Ø mm	0,50	0,004	0,006	0,007	0,008	0,010	0,012	0,014	0,016	0,019	Vorschübe f (mm/U)
	1,00	0,006	0,008	0,012	0,014	0,016	0,018	0,020	0,023	0,025	
	2,00	0,020	0,025	0,032	0,040	0,050	0,063	0,080	0,100	0,125	
	2,50	0,025	0,032	0,040	0,050	0,063	0,080	0,100	0,125	0,160	
	3,15	0,032	0,040	0,050	0,063	0,080	0,100	0,125	0,160	0,160	
	4,00	0,040	0,050	0,063	0,080	0,100	0,125	0,160	0,200	0,200	
	5,00	0,040	0,050	0,063	0,080	0,100	0,125	0,160	0,200	0,250	
	6,30	0,050	0,063	0,080	0,100	0,125	0,160	0,200	0,250	0,315	
	8,00	0,063	0,080	0,100	0,125	0,160	0,200	0,250	0,315	0,315	
	10,00	0,080	0,100	0,125	0,160	0,200	0,250	0,315	0,400	0,400	
	12,50	0,080	0,100	0,125	0,160	0,200	0,250	0,315	0,400	0,500	
	16,00	0,100	0,125	0,160	0,200	0,250	0,315	0,400	0,500	0,630	
	20,00	0,125	0,160	0,200	0,250	0,315	0,400	0,500	0,630	0,630	
	25,00	0,160	0,200	0,250	0,315	0,400	0,500	0,630	0,800	0,800	
	31,50	0,160	0,200	0,250	0,315	0,400	0,500	0,630	0,800	1,000	
	40,00	0,200	0,250	0,315	0,400	0,500	0,630	0,800	1,000	1,250	

Werkzeuge mit fett gedruckten Vorschubreihen-Codebuchstaben sind für die entsprechende Werkstoffgruppe vorrangig einzusetzen.

Kühlmitteleinsatz:

- Schneidöl, hochaktiviert ■
- Bohrölemulsion ■
- ohne Schmiermittel
- nur Luftkühlung

Werkstoffgruppe	Werkstoffbeispiele, neue Bezeichnung (in Klammern alte Bezeichnung) Fettgedruckte Zahlen = Werkstoff-Nr. nach DIN EN	Zugfestigkeit MPa (N/mm ²)	Härte	Kühl- mittel
Allgemeine Baustähle	1.0035 S185(St33), 1.0486 P275N(StE285), 1.0345 P235GH(H1), 1.0425 P265GH(H2) 1.0050 E295 (St50-2), 1.0070 E360 (St70-2), 1.8937 P500NH (WStE500)	≤500 >500-850		■ ■
Automatenstähle	1.0718 11SMnPb30 (9SMnPb28), 1.0736 11SMn37 (9SMn36) 1.0727 46S20 (45S20), 1.0728 (60S20), 1.0757 46SPb20 (45SPb20)	≤850 850-1000		■ ■
Unlegierte Vergütungsstähle	1.0402 C22, 1.1178 C30E (Ck30) 1.0503 C45, 1.1191 C45E (Ck45) 1.0601 C60, 1.1221 C60E (Ck60)	≤ 700 700-850 850-1000		■ ■ ■
Legierte Vergütungsstähle	1.5131 50MnSi4, 1.7003 38Cr2, 1.7030 28Cr4 1.5710 36NiCr6, 1.7035 41Cr4, 1.7225 42CrMo4	850-≤1000 1000-1200		■ ■
Unlegierte Einsatzstähle	1.0301 (C10), 1.1121 C10E (Ck10)	≤750		■
Legierte Einsatzstähle	1.7043 38Cr4 1.5752 15NiCr13 (15NiCr13), 1.7131 16MnCr5, 1.7264 20CrMo5	850-≤1000 1000-1200		■ ■
Nitrierstähle	1.8504 34CrAl6 1.8519 31CrMoV9, 1.8550 34CrAlNi7	>850-≤1000 ≥1000-1200		■ ■
Werkzeugstähle	1.1750 C75W, 1.2067 102Cr6, 1.2307 29CrMoV9 1.2080 X210Cr12, 1.2083 X42Cr13, 1.2419 105WCr6, 1.2767 X45NiCrMo4	≤850 >850-1000		■ ■
Schnellarbeitsstähle	1.3243 S 6-5-2-5, 1.3343 S 6-5-2, 1.3344 S 6-5-3	≥650-1000		■
Federstähle	1.5026 55Si7, 1.7176 55Cr3, 1.8159 51CrV4 (51CrV4)		≤330 HB	■
Gehärtete Stähle	-		≤40-48 HRC >48-60 HRC	■ ■
Rostfreie Stähle, geschwefelt austenitisch martensitisch	1.4005 X12CrS13, 1.4104 X14CrMoS17, 1.4105 X6CrMoS17, 1.4305 X8CrNiS18-9 1.4301 X5CrNi18-10 (V2A), 1.4541 X6CrNiTi18-10, 1.4571 X6CrNiMoTi 17-12-2 (V4A) 1.4057 X20CrNi 17 2 (X17CrNi16-2), 1.4122 X39CrMo17-1, 1.4521 X2CrMoTi18-2	≤850 ≤850 ≤850		■ ■ ■
Gusseisen	0.6010 EN-GJL-100(GG10), 0.6020 EN-GJL-200(GG20) 0.6025 EN-GJL-250(GG25), 0.6035 EN-GJL-350(GG35)	850-≤1000 1000-1200		■ ■
Kugelgraphit- und Temperguss	0.7050 EN-GJS-500-7(GGG50), 0.8035 EN-GJMW-350-4(GTW35) 0.7070 EN-GJS-700-2(GGG70), 0.8170 EN-GJMB-700-2(GTS70)		≤240 HB <300 HB	■ ■
Hartguss	-		≤350 HB	■
Neue Gusswerkstoffe GGV	EN-GJV250 (GGV25), EN-GJV350 (GGV35) EN-GJV400 (GGV40), EN-GJV500 (GGV50), SiMo6			■ ■
Neue Gusswerkstoffe ADI	EN-GJS-800-8 (ADI800), EN-GJS-1000-5 (ADI1000) EN-GJS-1200-2 (ADI1200), EN-GJS-1400-1 (ADI1400)	800-1000 1200-1400		■ ■
Sonderlegierungen	Nimonic, Inconel, Monel, Hastelloy	≤1200		■
Titan und Titan-Legierungen	3.7024 Ti99,5, 3.7114 TiAl5Sn2,5, 3.7124 TiCu2 3.7154 TiAl6Zr5, 3.7165 TiAl6V4, 3.7184 TiAl4Mo4Sn2,5, - TiAl8Mo1V1	≤850 >850-1200		■ ■
Aluminium und Al-Legierungen	3.0255 Al99,5, 3.2315 AlMgSi1, 3.3515 AlMg1	≤400		■
Al-Knetlegierungen	3.0615 AlMgSiPb, 3.1325 AlCuMg1, 3.3245 AlMg3Si, 3.4365 AlZnMgCu1,5	≤450		■
Al-Gusslegierungen ≤ 10 % Si > 10 % Si	3.2131 G-AlSi5Cu1, 3.2153 G-AlSi7Cu3, 3.2573 G-AlSi9 3.2581 G-AlSi12, 3.2583 G-AlSi12Cu, - G-AlSi12CuNiMg	≤600 ≤600		■ ■
Magnesium-Legierungen	3.5200 MgMn2, 3.5812.05 G-MgAl8Zn1, 3.5612.05 G-MgAl6Zn1	≤450		!
Kupfer, niedriglegiert	2.0070 SE-Cu, 2.1020 CuSn6, 2.1096 G-CuSn5ZnPb	≤400		■
Messing, kurzspanend langspanend	2.0380 CuZn39Pb2, 2.0401 CuZn39Pb3, 2.0410 CuZn43Pb2 2.0250 CuZn20, 2.0280 CuZn33, 2.0332 CuZn37Pb0,5	≤600 ≤600		■ ■
Bronzen, kurzspanend	2.1090 CuSn7ZnPb, 2.1170 CuPb5Sn5, 2.1176 CuPb10Sn 2.0790 CuNi18Zn19Pb	≤600 >600-850		■ ■
Bronzen, langspanend	2.0916 CuAl5, 2.0960 CuAl9Mn, 2.1050 CuSn10 2.0980 CuAl11Ni, 2.1247 CuBe2	≤850 >850-1000		■ ■
Kunststoffe, duroplastisch thermoplastisch	Epoxidharz, Resopal, Pertinax, Moltopren Plexiglas, Hostalen, Novodur, Makralon		-	■ ■
Kunststoffe, aramidfaserverstärkt glas-/kohlefaserverstärkt	Kevlar GFK/CFK		-	■ ■

≤5×D Bohrtiefe

Katalog-Nr.	51786
Schneidstoff	VHM
HM-Anwendgsgr.	K/P
Oberfläche	TiAIN nano
DIN/Form	6537L
Typ	SuperV-X
Innenkühlung	mit
Katalogseite	6

≤7×D Bohrtiefe

Katalog-Nr.	51791
Schneidstoff	VHM
HM-Anwendgsgr.	K/P
Oberfläche	TiAIN nano
DIN/Form	6537L
Typ	SuperV-X
Innenkühlung	mit
Katalogseite	8



V _c m/min	VR-Code
200	H
200	G
200	H
200	H
180	H
160	H
130	H
120	H
120	G
180	H
120	H
110	G
110	G
100	E
90	G
65	F
60	E
60	E
55	C
80	E
60	E
180	I
160	I
140	I
140	H
140	H
140	H
80	G
80	G
30	D
40	D
35	C

V _c m/min	VR-Code
180	H
180	G
180	H
180	H
160	H
140	H
120	H
110	H
110	G
160	H
110	H
100	G
100	G
90	E
80	G
60	F
55	E
55	E
45	C
70	E
50	E
165	I
145	I
130	I
130	H
130	H
130	H
70	G
70	G
25	D
35	D
30	C

seit
1887



SuperV-X

Unser Programm

Produkte

Bohrwerkzeuge
Gewindewerkzeuge
Fräswerkzeuge
Reibwerkzeuge
Senkwerkzeuge
Faswerkzeuge
Sonderwerkzeuge aus HSS, PKD und Hartmetall
(nach Zeichnung oder Eigenentwicklung)
Werkzeugaufnahmen

Dienstleistungen

Nachschleifen
Sonderanschliffe
Nachbeschichten
Lohnbeschichten
Entschichten
Intelligente Werkzeugdepotsysteme
Anwendungstechnische Beratung

Ihr Ansprechpartner vor Ort:

 R. Stock AG

Lengeder Straße 29–35 • 13407 Berlin, Deutschland • Telefon: +49 30 40 90 3-33 300

Fax Inland: +49 30 40 90 3-33 378 • Mail Inland: verkauf@stock.de

Fax Export: +49 30 40 90 3-33 324 • Mail Export: sales@stock.de

www.stock.de